

National Physician Survey

NATIONAL
PHYSICIAN
SURVEY



SONDAGE
NATIONAL DES
MÉDECINS

Presented to the CFPC Section of Teachers Council

June 5, 2014

By Mona Ali

NATIONAL
PHYSICIAN
SURVEY



SONDAGE
NATIONAL DES
MÉDECINS

What is NPS?

- National Physician Survey (NPS) is the **ONLY national census survey** of physicians in Canada.
- Annual electronic online survey alternating between physicians and medical student/residences (2004, 2007, 2010, 2012, **2015**)
- Condensed survey focused on relevant health care themes impacting physicians
 - NPS 2013: Employment Opportunities and Challenges
 - Practice focus and shifts in area, practice settings, accessibility, financial, patient roster, rural vs urban, electronic medical records.
 - NPS 2014: Use of Information Technology
- Custom data request services provided: Governmental- policy, Academics, others

Project Partners

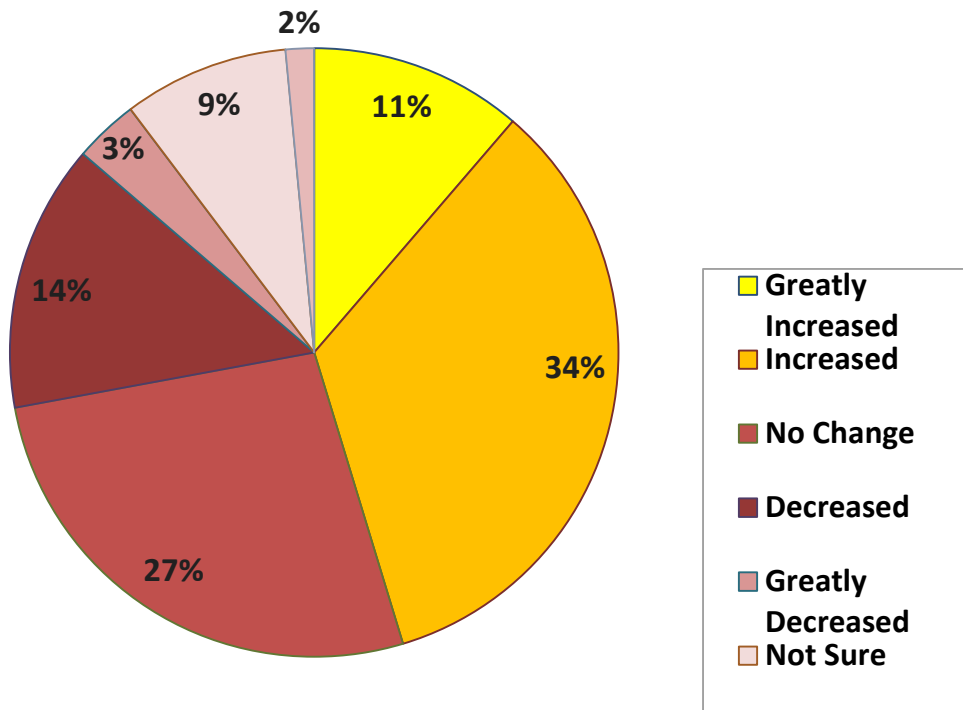
- College of Family Physicians of Canada (CFPC)
- Canadian Medical Association (CMA)
- Royal College of Physicians and Surgeons of Canada (Royal College)

NPS 2013

- Theme: [Employment Opportunities/Challenges](#)
- Data Release: [October 23rd, 2013](#)
- Input from 10,500 Physicians
 - [More than 4,600 Family Physicians participated](#)
- Average time to complete [~15-20 minutes](#)
- Eligible to earn 2 MainPro-C credits
- Full data available on the NPS website
www.nationalphysiciansurvey.ca

NPS 2013 Results

Productivity Change since Implementing EMR



- 45% of Family Physicians reported increase productivity in their practice
- 65.2% of Family Physicians reported quality of patient care got better or much better.

FP Practice Focus (Present and Future)

Q2i Is your practice focused in any of the following areas? Select all that apply.

Question asked of FP/GPs only		Sex			Age group						All Family Physicians
		Male	Female	NR	<35	35-44	45-54	55-64	65+	NR	
Practice areas	None	38.4%	38.2%	37.1%	28.4%	32.5%	40.3%	43.2%	41.8%	39.1%	38.2%
	Addiction Medicine	5.2%	3.4%	5.4%	3.9%	4.2%	3.9%	4.7%	6.2%	4.9%	4.5%
	Chronic Non-Cancer Pain	8.1%	4.9%	9.2%	4.4%	6.0%	6.4%	7.8%	8.3%	8.9%	6.9%
	Developmental Disabilities	0.8%	0.9%	1.6%	0.1%	0.6%	1.0%	1.4%	0.4%	1.6%	0.9%
	Child and Adolescent Health	5.6%	13.6%	15.4%	11.8%	11.2%	10.7%	7.7%	2.9%	15.1%	9.7%
	Emergency Medicine	19.3%	12.9%	17.0%	31.0%	26.2%	16.6%	7.9%	4.0%	16.3%	16.5%
	Family Practice Anesthesia	2.4%	1.0%	1.1%	2.7%	2.3%	1.6%	1.6%	0.7%	1.1%	1.7%
	Global Health	3.3%	3.1%	5.0%	2.9%	3.6%	2.8%	3.5%	3.5%	5.0%	3.4%
	Health Care of the Elderly	19.8%	17.5%	25.1%	10.7%	16.1%	20.0%	19.7%	27.5%	23.8%	19.3%
	Hospital Medicine	18.6%	17.1%	21.2%	27.5%	23.1%	17.4%	14.2%	8.9%	21.1%	18.2%
	Maternity and Newborn Care	6.2%	17.7%	14.1%	18.2%	16.1%	12.1%	6.4%	5.5%	13.6%	11.6%
	Mental Health	11.4%	12.6%	14.4%	7.6%	11.4%	12.8%	13.7%	11.2%	14.2%	12.1%
	Occupational Medicine	6.6%	2.3%	4.4%	2.2%	3.3%	4.7%	5.8%	7.9%	4.2%	4.7%
	Palliative Care	10.4%	9.9%	13.9%	11.3%	8.8%	9.4%	11.4%	11.5%	13.0%	10.5%
	Prison Health	1.0%	0.4%	0.8%	0.1%	0.5%	0.5%	1.3%	0.9%	0.8%	0.7%
	Respiratory Medicine	2.2%	1.7%	4.0%	1.5%	2.9%	2.1%	1.6%	1.2%	3.9%	2.2%
	Sport and Exercise Medicine	5.2%	2.5%	4.2%	3.1%	4.3%	4.0%	4.8%	2.4%	4.0%	4.0%
NR		5.6%	6.6%	7.8%	4.9%	7.1%	5.7%	6.8%	5.5%	6.7%	6.2%
Total											
	N	16082	12748	2757	3313	6458	7809	7788	3445	2774	31587
	n	1839	2015	379	607	944	1029	921	355	377	4233

Q5ii What area are you planning to focus in?

Question asked of FP/GPs only		Sex			Age group						All Family Physicians
		Male	Female	NR	<35	35-44	45-54	55-64	65+	NR	
Area of focus planned	Addiction Medicine	2.5%	1.9%	3.7%	2.6%	2.9%	0.9%	3.0%	1.3%	3.9%	2.3%
	Chronic Non-Cancer Pain	4.4%	1.7%	2.4%	1.5%	3.6%	1.5%	5.7%	5.0%	2.5%	3.0%
	Developmental Disabilities	0.3%	0.0%	0.0%	0.0%	0.0%	0.0%	0.8%	0.0%	0.0%	0.1%
	Child and Adolescent Health	2.1%	5.1%	6.3%	4.3%	5.0%	4.3%	0.4%	0.0%	6.3%	3.8%
	Emergency Medicine	13.0%	5.9%	5.1%	16.1%	14.3%	8.5%	0.0%	0.0%	5.4%	9.2%
	Family Practice Anesthesia	1.6%	0.4%	0.0%	1.5%	0.9%	0.9%	0.5%	2.1%	0.0%	0.9%
	Global Health	2.3%	3.0%	2.4%	3.1%	2.9%	1.3%	4.0%	2.1%	2.5%	2.6%
	Health Care of the Elderly	7.2%	11.8%	13.3%	3.5%	8.6%	8.0%	15.8%	22.1%	11.1%	9.7%
	Hospital Medicine	6.0%	4.2%	10.5%	10.1%	5.1%	5.0%	2.3%	0.0%	10.8%	5.6%
	Maternity and Newborn Care	0.5%	7.6%	2.7%	9.5%	4.1%	2.3%	2.0%	0.0%	2.9%	3.8%
	Mental Health	3.6%	5.5%	11.8%	3.2%	4.9%	5.3%	4.7%	3.5%	11.2%	5.1%
	Occupational Medicine	2.6%	1.4%	2.4%	1.0%	2.8%	2.8%	1.0%	0.0%	2.5%	2.0%
	Palliative Care	6.0%	8.5%	2.8%	8.8%	6.0%	5.7%	8.3%	13.5%	1.8%	6.9%
	Prison Health	0.6%	0.5%	0.0%	2.0%	0.2%	0.0%	0.5%	0.0%	0.0%	0.5%
	Respiratory Medicine	0.3%	0.3%	1.5%	0.3%	0.5%	0.3%	0.0%	0.0%	1.6%	0.4%
	Sport and Exercise Medicine	8.8%	4.6%	3.5%	5.5%	8.4%	9.4%	3.4%	2.5%	1.5%	6.6%
	Other	34.6%	35.7%	24.3%	24.4%	26.8%	40.7%	44.0%	45.9%	30.2%	34.3%
NR		3.8%	1.9%	7.4%	2.5%	3.1%	3.3%	3.5%	2.1%	5.6%	3.2%
Total	%	100.0%	100.0%	100.0%	100.0%	100.0%	100.0%	100.0%	100.0%	100.0%	100.0%
	N	3221	2962	510	1094	1826	1834	1095	361	481	6692
	n	401	482	74	206	277	235	139	32	68	957

NPS 2014

- **Theme:** Use of Information Technology
- **Available:** NOW in field till June 30, 2014
- **IT Topics include:**
 - Use of Electronic Records (EMR/EHR)
 - Websites
 - Mobile Apps
 - Use of Social Media
 - Telemedicine/Telehealth
 - E-mail
 - And more!



Thank you

Mona Ali, NPS Project Manager

mali@cfpc.ca

1-800-387-6197 x242



Follow NPS on Twitter [@npscanada!](https://twitter.com/npscanada) 

www.nationalphysiciansurvey.ca